

niban®

GRANULAR BAIT

ACCEPTED
FOR REGISTRATION

Apr 14, 2016

New York State Department
of Environmental Conservation
Division of Materials Management
Pesticide Product Registration

Doc id: 544978

niban®

GRANULAR BAIT

kills and controls

**Cockroaches, Silverfish,
Crickets, Slugs, Snails,
Carpenter Ants and Ants
(except fire ants)**



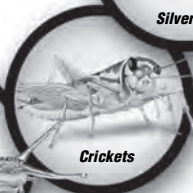
Ants



Cockroaches



Silverfish



Crickets



Slugs



Snails



100 Nisus Drive • Rockford, TN USA 37853

**KEEP OUT OF REACH OF CHILDREN
CAUTION**

SEE BOOKLET FOR FIRST AID AND ADDITIONAL
PRECAUTIONARY STATEMENTS.

ACTIVE INGREDIENT:

Orthoboric Acid	5%
OTHER INGREDIENTS	95%
TOTAL	100%
EPA Reg No. 64405-2	EPA EST. 64405-TN-1
U.S. Patent Nos. 7223415, 7264827	



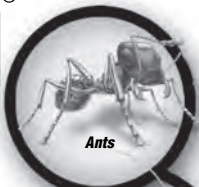
NET CONTENTS 4 lbs. (1.81 kg)

niban[®]

GRANULAR BAIT

kills and controls

Cockroaches, Silverfish, Crickets, Slugs, Snails, Carpenter Ants and Ants (except fire ants)



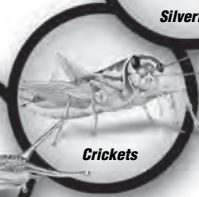
Ants



Cockroaches



Silverfish



Crickets



Slugs



Snails

Nisus

100 Nisus Drive • Rockford, TN USA 37853

NIBAN[®]

GRANULAR BAIT

A Weather/Moisture Resistant Bait to Kill and Control Ants (except fire ants), Carpenter Ants, Cockroaches, Crickets, Earwigs, Silverfish, Snails and Slugs

FOR BOTH INTERIOR AND EXTERIOR USE

Above-ground Transformers, Aircraft, Apartments, Apartment Buildings, Boats, Buses, Campgrounds, Camps, Cemeteries, Factories, Federally Inspected (USDA) Meat and Poultry Plants, Flower Gardens, Food Handling Establishments, Food Processing Plants, Garages, Greens of Golf Courses, Grocery Stores, Groundcovers, Homes, Home Lawns, Hospitals, Hotels, Industrial Plants, In-ground Utility Boxes, Interiorscapes, Kennels, Lath Houses, Lawns, Libraries, Markets, Military Bases, Mobile Homes, Motels, New Construction, Nursing Homes, Offices, Ornamental Home Greenhouses, Ornamental Turf, Ornamentals, Other Structures, Parks, Pedestal Boxes, Pet Stores, Picnic Areas, Playing Fields, Public and Private Institutions, Recreational Turf, Recreational Vehicles, Restaurants, Restaurants (non-food areas), Schools, Sewers, Ships, Shrubs, Stores, Supermarkets, Theaters, Trains, Trucks, Utilities, Vending Machines, Warehouses, Yachts, Zoos.

First Aid

If In Eyes:	<ul style="list-style-type: none">• Hold eye open and rinse slowly and gently with water for 15-20 minutes. Remove contact lenses, if present, after the first 5 minutes, then continue rinsing.• Call a poison control center or doctor for treatment advice.
If On Skin:	<ul style="list-style-type: none">• Take off contaminated clothing.• Immediately rinse skin with plenty of water for 15-20 minutes.• Call a poison control center or doctor for treatment advice.

Have the product container or label with you when calling a poison control center or doctor or going for treatment.

PRECAUTIONARY STATEMENTS

Hazards to Humans & Domestic Animals

CAUTION: Harmful if absorbed through skin. Causes moderate eye irritation. Avoid contact with skin, eyes or clothing.

Personal Protective Equipment (PPE)

Applicators and handlers must wear: Long-sleeved shirt and long pants; waterproof gloves; and shoes plus socks. Follow manufacturer's instructions for cleaning/maintaining PPE. If no such instructions for washables are given, use detergent and hot water.

User Safety Recommendations

Users should:

- Wash hands before eating, drinking, chewing gum, using tobacco or using the toilet.
- Remove clothing immediately if pesticide gets inside, then thoroughly wash and put on clean clothing.
- Immediately remove PPE after handling this product. Wash the outside of gloves before removing. As soon as possible, thoroughly wash and change into clean clothing.

Environmental Hazards

Do not apply directly to water, to areas where surface water is present or to intertidal areas below the mean high-water mark. Do not contaminate water when disposing of equipment washwaters or rinsate.

DIRECTIONS FOR USE

It is a violation of Federal law to use this product in a manner inconsistent with its labeling.

GENERAL INFORMATION

This product is a ready-to-use, weather/moisture resistant bait that controls and kills Ants (except fire ants), Cockroaches, Crickets, Earwigs, Silverfish, Snails and Slugs specifically: **ANTS:** Argentine, Carpenter, Thief, Pharaoh, Little Black, Pavement,

Odorous House and Crazy Ants. **COCKROACHES:** Asian, American, Brown, Brown-banded, Smokeybrown, German and Oriental Cockroaches. **CRICKETS:** Camel, House, Field and Mole Crickets. **SNAILS AND SLUGS. EUROPEAN EARWIGS.**

Do not contaminate this product with other pesticides. If this product becomes contaminated with another pesticide it will lose its effectiveness. Do not apply directly to food and avoid contamination of feed and foodstuff. In commercial food handling facilities, cover or remove any food during application. In food handling and other areas, bait may be placed in removable bait stations. Always record the number and location of bait stations. This product is designed to be used as a residual treatment in an Integrated Pest Management program incorporating good sanitation practices. This product may be applied in appropriate areas with a power duster (except in California). Consult equipment manufacturer for recommended settings. Keep children and pets out of treatment area until application has been completed. Do not treat pets with this product. Avoid over-application around ornamental plants and fish ponds. Do not apply this product in combination with fertilizers, other pesticides or other biologically-active materials.

APPLICATION INSTRUCTIONS

TO CONTROL AND KILL ANTS (EXCEPT FIRE ANTS), COCKROACHES, CRICKETS, MOLE CRICKETS, SNAILS AND SLUGS ON CAMPGROUNDS, CEMETERIES, GREENS OF GOLF COURSES, HOME LAWNS, LAWNS, ORNAMENTAL TURF, PARKS, PICNIC AREAS, PLAYING FIELDS AND RECREATIONAL TURF: Apply bait evenly to affected areas at the rate of 2 pounds per 1000 square feet (3.2 ounces or 2/3 cup per 100 square feet) or 90 pounds per acre. **When treating for mole crickets:** Thoroughly irrigate treatment areas in the late afternoon prior to application. For maximum effectiveness, do not irrigate treated area immediately after application.

EXTERIOR BAITING TO CONTROL AND KILL SNAILS AND SLUGS IN FLOWER GARDENS AND AROUND ORNAMENTALS, GROUNDCOVERS AND SHRUBS: At the beginning of the spring planting season (before damage occurs), broadcast 6 ounces per 100 square feet in areas likely to be infested with snails and slugs. It is best to apply the bait during early morning or evening when slugs and snails are present and eating. Reapply every four weeks for satisfactory control.

TO CONTROL AND KILL SNAILS AND SLUGS IN ORNAMENTAL HOME GREENHOUSES AND LATH HOUSES: Evenly distribute granules on and under benches at

the rate of 6 ounces per 100 square feet. Do not place in flats or pots.

TO CONTROL AND KILL SNAILS AND SLUGS IN INTERIORSCAPES OR ORNAMENTAL GARDENS: Evenly apply bait to soil at a rate of 6 ounces per 100 square feet no more than once every 4 to 6 weeks.

EXTERIOR BAITING TO CONTROL AND KILL ANTS (EXCEPT FIRE ANTS), INCLUDING CARPENTER ANTS, AROUND APARTMENT BUILDINGS, FOOD PROCESSING PLANTS, GARAGES, HOMES, HOSPITALS, HOTELS, KENNELS, MOTELS, PET STORES, PUBLIC & PRIVATE INSTITUTIONS, RECREATIONAL VEHICLES, RESTAURANTS, SCHOOLS, SUPERMARKETS, WAREHOUSES AND OTHER STRUCTURES: Treat exterior perimeter areas of structure in a band 2 to 4 feet wide at a rate of 6 ounces per 100 square feet. Also apply product in a 2 to 4 foot band around all trees, stumps, firewood piles and other locations where carpenter ants may nest. If the nest is located in a hollow tree or stump, apply 1/2 to 1 ounce of product directly into the cavity. Apply along ant trails and in areas where ant activity has been noted.

TO CONTROL AND KILL ANTS (EXCEPT FIRE ANTS), COCKROACHES, CRICKETS, EARWIGS AND SILVERFISH WITHIN AND AROUND THE EXTERIOR OF STRUCTURES SUCH AS APARTMENT BUILDINGS, FOOD PROCESSING PLANTS (NON-FOOD AREAS), GARAGES, HOMES, HOSPITALS, HOTELS, KENNELS, MOTELS, PET STORES, PUBLIC & PRIVATE INSTITUTIONS, RECREATIONAL VEHICLES, RESTAURANTS (NON-FOOD AREAS), SCHOOLS, SEWERS, STORES, SUPERMARKETS AND WAREHOUSES: Apply at a rate of 4 pounds per 1000 square feet (6 ounces or 1 1/4 cups per 100 square feet) of surface area. Spread evenly in crawl spaces, attics, drop ceilings and cellars with dirt or gravel floors. Concentrate application in areas where insect activity is most prevalent. In attics, be sure to apply in eaves and access drains. In warehouses, garages and basements, concentrate application along walls and baseboards. This product may also be applied in inaccessible areas such as cracks and crevices where insects may hide. Any bait visible after application must be brushed into cracks and crevices or removed. Apply in pits of elevator, dumbwaiter and trash chute shafts. Apply under and behind pallets and boxes in storerooms. Bait may also be placed in removable bait stations in areas accessible to insects but inaccessible to children and pets. Always record the location and number of bait stations. Regularly inspect bait stations and replace bait as needed. In sewers, apply along ledges and around manhole entrances. Treat exterior

perimeter building walls in a band approximately 2 feet wide and scatter bait in flower beds, leaf litter, wood piles, trash cans and refuse areas. Reapply as necessary.

For treating new construction: Apply in wall voids and other areas where insects may hide.

For perimeter treatments: Spread bait at a rate of 6 ounces or 1-1/4 cups per 100 square feet in a band at least 2 feet wide around foundations, patios, driveways, sidewalks, entrances to homes and buildings, or other areas where insects are present. Apply around landscape lighting, floodlights, street lamps or other exterior fixtures and scatter bait in flower beds, leaf litter, wood piles, trash cans and refuse areas. Reapply as necessary.

For treating ant mounds: Apply 1/2 to 1 ounce of this product around all ant mounds. Supplement by broadcast application in immediate area and along ant trails and in areas where ant activity has been noted.

TO CONTROL AND KILL ANTS (EXCEPT FIRE ANTS), COCKROACHES, CRICKETS, EARWIGS AND SILVERFISH IN: AIRCRAFT, APARTMENT BUILDINGS, APARTMENTS, BOATS, BUSES, CAMPS, FACTORIES, FOOD HANDLING ESTABLISHMENTS, FOOD PROCESSING PLANTS, GARAGES, GROCERY STORES, HOMES, HOSPITALS, HOTELS, INDUSTRIAL PLANTS, KENNELS, LIBRARIES, MARKETS, MILITARY BASES, MOBILE HOMES, MOTELS, NEW CONSTRUCTION, NURSING HOMES, OFFICES, PET STORES, PRIVATE & PUBLIC INSTITUTIONS, RECREATIONAL VEHICLES, RESTAURANTS, SCHOOLS, SEWERS, SHIPS, SUPERMARKETS, THEATERS, TRAINS, TRUCKS, UTILITIES, WAREHOUSES, YACHTS AND ZOOS: Food area application limited to only crack and crevice treatment. Apply only in areas inaccessible to children and pets. Avoid contamination of feed and food-stuffs. Apply by scattering/dusting under and behind refrigerator, cooler, stove, sink, dishwasher, washing machine and dryer tubs; counters; into openings around drains, water pipes and electrical conduits; and in cracks and crevices along baseboards and corners of cabinets, counter tops, cupboards and closets. Remove all lower drawers in kitchen and bathroom cabinets, bedroom dressers and chests of drawers, then scatter/dust in drawer wells. Bait may also be applied into and around areas of insect infestation of **above-ground transformers, in-ground utility boxes, pedestal boxes and vending machines.** Any bait visible after application must be brushed into cracks and crevices or removed. Reapply as necessary. Bait may also be placed in bait sta-

tions in areas accessible to insects but inaccessible to children and pets. Always record the location and number of bait stations. Regularly inspect bait stations and replace bait as needed.

CRACK AND CREVICE APPLICATIONS IN AIRCRAFT, APARTMENT BUILDINGS, APARTMENTS, BOATS, BUSES, CAMPS, FACTORIES, FOOD HANDLING ESTABLISHMENTS, FOOD PROCESSING PLANTS, GARAGES, GROCERY STORES, HOMES, HOSPITALS, HOTELS, INDUSTRIAL PLANTS, KENNELS, LIBRARIES, MARKETS, MILITARY BASES, MOBILE HOMES, MOTELS, NEW CONSTRUCTION, NURSING HOMES, OFFICES, PET STORES, PRIVATE & PUBLIC INSTITUTIONS, RECREATIONAL VEHICLES, RESTAURANTS, SCHOOLS, SEWERS, SHIPS, SUPERMARKETS, THEATERS, TRAINS, TRUCKS, UTILITIES, WAREHOUSES, YACHTS

AND ZOOS: Crack and crevice applications may be made using most types of dust applicators. A bellows type duster works best. Insert stem into gaps, cracks and crevices and apply 2 to 6 puffs per lineal foot, depending upon the severity of the infestation. Any bait visible after application must be brushed into cracks and crevices or removed. Drill small holes to gain access into wall voids and under cabinets. This product may also be applied in appropriate areas with a power duster (except in California). Consult equipment manufacturer for recommended settings.

Application Sites and Directions:

1. Apply under and behind appliances in kitchens, bathrooms and utility rooms (remove kick plates if possible).
2. Kitchen and bathroom cabinets and vanities often have a space between the floor and the bottom drawer or cabinet. If a gap exists along the top of the kickplate, dust this product into the void area. If no gaps are present, drill a small hole every two feet along the kickplate, drilling at least one hole under each cabinet, and apply this product through the holes.
3. Apply in voids around plumbing pipes behind water heaters and under sinks in kitchens, bathrooms, showers and utility rooms. Pull back escutcheon plates around pipes to allow access to the void.
4. Remove electrical wall socket and switch covers and dust product around boxes and into voids. Do not apply product directly into electrical switch and outlet boxes.
5. Cracks or spaces between the wall and doorframes, cabinets, counter tops, molding or baseboards provide excellent hiding places for roaches and ants. Dust a small amount of this product into these areas wherever possible.

6. Apply under and behind vending machines. If access can be gained to the interior of the machine, apply around the interior base, being careful not to contaminate any foodstuffs.

TO CONTROL AND KILL COCKROACHES, CRICKETS, ANTS, EARWIGS AND SILVER-FISH in Federally inspected (USDA) meat and poultry plants: For application only in inedible product areas and non-processing areas as a crack and crevice treatment. Apply to cracks and crevices in areas such as around baseboards and in closets; beneath cabinets and appliances, in and around waste containers and into openings around drains, water pipes and electrical conduits. Any bait visible after application must be brushed into cracks and crevices or removed. Avoid contamination of feed and foodstuffs. Bait stations may be used. Always record the number and location of bait stations. Regularly inspect bait stations and replace bait as needed. This product is best used as a supplemental residual treatment preceded by approved spray and good sanitation practices.

STORAGE AND DISPOSAL

Do not contaminate water, food or feed by storage or disposal.

Pesticide Storage: Store in a dry place. Do not store where children or animals may gain access. **Pesticide Disposal:** Wastes resulting from the use of this product may be disposed of on site or at an approved waste disposal facility. **Container Disposal:** Non-refillable container; do not reuse or refill this container. Completely empty container into application equipment, then offer for recycling, if available; otherwise dispose of empty container in a sanitary landfill or by incineration.

WARRANTY DISCLAIMER

To the extent not prohibited by applicable law, Manufacturer warrants that this product conforms to the chemical description on the label and is reasonably fit for the purposes stated on the label when used in strict accordance with the directions, subject to the inherent risks set forth below. To the extent not prohibited by applicable law, **MANUFACTURER MAKES NO OTHER EXPRESS OR IMPLIED WARRANTY OF MERCHANTABILITY, FITNESS FOR A PARTICULAR PURPOSE OR ANY OTHER EXPRESS OR IMPLIED WARRANTY.**

INHERENT RISKS OF USE

The directions for use are believed to be adequate and must be carefully followed. It is impossible to eliminate all risks associated with use of this product. Lack of performance or other unintended consequences may result because of such factors as use of the product contrary to label instructions, abnormal conditions, the presence of other materials, climatic conditions or the manner of application, all of which are beyond the control of the Manufacturer. To the extent not prohibited by applicable law, the buyer/user assumes all such risks.

LIMITATION OF REMEDIES

To the extent not prohibited by applicable law, the exclusive remedy for losses or damages resulting from this product (including claims based on contract, negligence, strict liability or other legal theories) shall be limited to, at Manufacturer's election, one of the following:

1. Refund of purchase price paid by buyer or user for product bought, or
2. Replacement of amount of product used.

To the extent not prohibited by applicable law: a) Manufacturer shall not be liable for losses or damages resulting from handling or use of this product unless Manufacturer is promptly notified of such loss or damage in writing; and b) **TO THE EXTENT NOT PROHIBITED BY APPLICABLE LAW, IN NO CASE SHALL MANUFACTURER BE LIABLE FOR CONSEQUENTIAL OR INCIDENTAL DAMAGES OR LOSSES, INCLUDING WITHOUT LIMIT, HEALTH RELATED DAMAGES OR INJURIES.**

The terms of this **Warranty Disclaimer** and **Limitation of Remedies** cannot be varied by any written or verbal statements or agreements. No employee or sales agent of Manufacturer or the seller is authorized to vary or exceed the terms of this **Warranty Disclaimer** or **Limitation of Remedies** in any manner.

It is not intended that this product be used to practice any applicable patent, whether mentioned or not, without procurement of a license if necessary from the owner following investigation by the user.



Nisus Corporation®
100 Nisus Drive • Rockford, TN 37853 USA
(800) 264-0870

Niban and Nisus Corporation are registered trademarks of Nisus Corporation.
©2016 Nisus Corporation #NBCG-0216a-SAL041315

niban[®]

GRANULAR BAIT

niban[®]

GRANULAR BAIT

kills and controls

Cockroaches, Silverfish, Crickets, Slugs, Snails, Carpenter Ants and Ants (except fire ants)



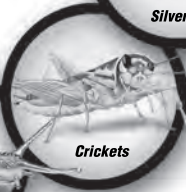
Ants



Cockroaches



Silverfish



Crickets



Slugs



Snails

Nisus

100 Nisus Drive • Rockford, TN USA 37853

**KEEP OUT OF REACH OF CHILDREN
CAUTION**

SEE BOOKLET FOR FIRST AID AND ADDITIONAL
PRECAUTIONARY STATEMENTS.

ACTIVE INGREDIENT:

Orthoboric Acid	5%
OTHER INGREDIENTS	95%
TOTAL	100%
EPA Reg No. 64405-2	EPA EST. 64405-TN-1
U.S. Patent Nos. 7223415, 7264827	



NET CONTENTS 4 lbs. (1.81 kg)

